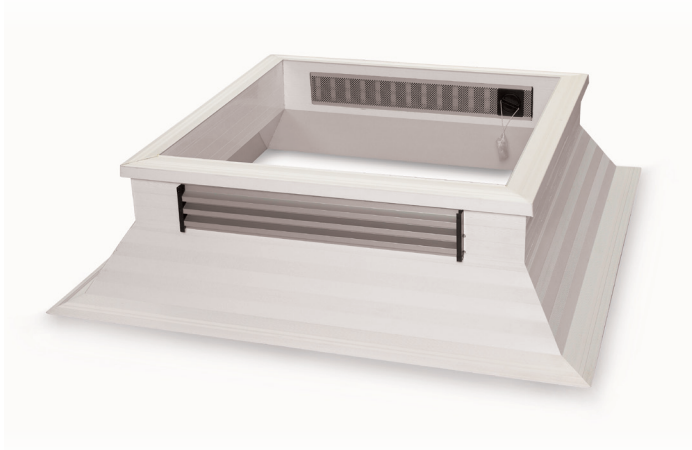


TECHNICAL FILE

# Skylux<sup>®</sup>

ventilation grid for skylight curb





## General product description

The Skylux® ventilation grid for Skylux® skylight curb is a regulable slide grid for ventilation. The inner grid is in white lacquered aluminium. The inner perforated aluminium slide can be closed and can be used as insect screen. The ventilation flow is continuously regulated by switch and cord. The ventilation grid can be built in 1 or more sides of a PVC, polyester or metal curb. A curb with ventilation grid must have a width of at least 80 cm and a height of 30 cm.

## Specific characteristics

Ventilation capacity at 2 Pa .....	102.6m <sup>3</sup> /h/m or useful 51.30 m <sup>3</sup> /h/grid
at 10 Pa .....	193 m <sup>3</sup> /h/m or useful 96.5 m <sup>3</sup> /h/grid
	geometric ventilation surface 285 cm <sup>2</sup> / 1m
	for Skylux® ventilation grid (0.5m useful so 142.5 cm <sup>2</sup> )
Water tightness .....	> 7 Kj/m <sup>2</sup>
Wind tightness .....	> 130 %
Sizes .....	Grid height 100 mm
	Grid width 600 mm
	Grid thickness 9.5 mm
Daylight height .....	63 mm
Adjustment .....	Continuously

*For rectangular shapes: standard execution implies the installation of 1 ventilation grid on the short side of the curb, from a daylight size of 80 cm. Other position on request. For square shapes, the ventilation grid must be mounted vertically on the hinge side. Combinations with an electric roof access or roof access frame on request. It's possible to build several grids. Positioning in accordance with Skylux.*

## Features

The ventilation grid is regulable and provides continuous ventilation even when it rains (in times when it is preferable that the ventilation system is closed).

## Attestations and certificates

- NEN 1087

SKYLUX  
 SPINNERIJSTRAAT 100 - B-8530 STASEGEM  
 T +32 (0)56 20 00 00 - F +32 (0)56 21 95 99  
 INFO@SKYLUX.BE  
 WWW.SKYLUX.BE

